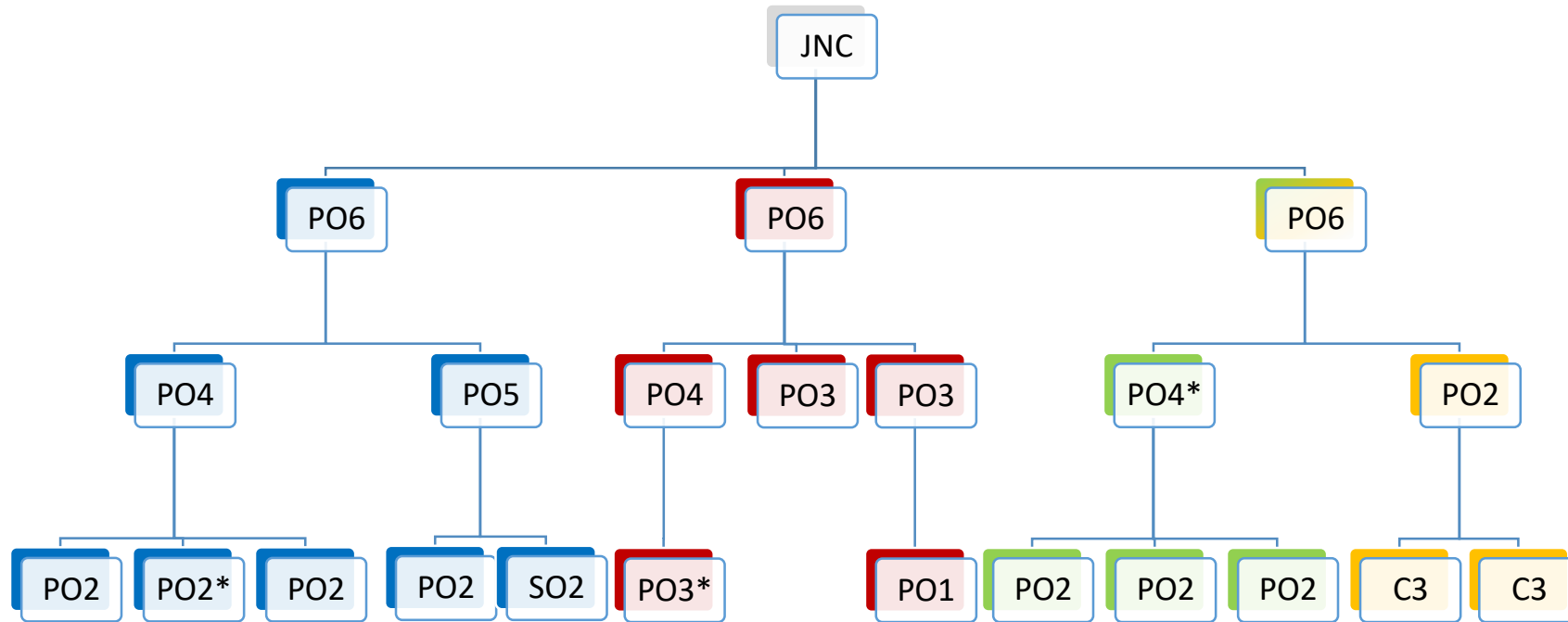



Intelligence & Policy current structure October 2020



Key

 Consultation & Engagement and Policy team

 Corporate Risk & Performance team

 Spatial Data & Intelligence team

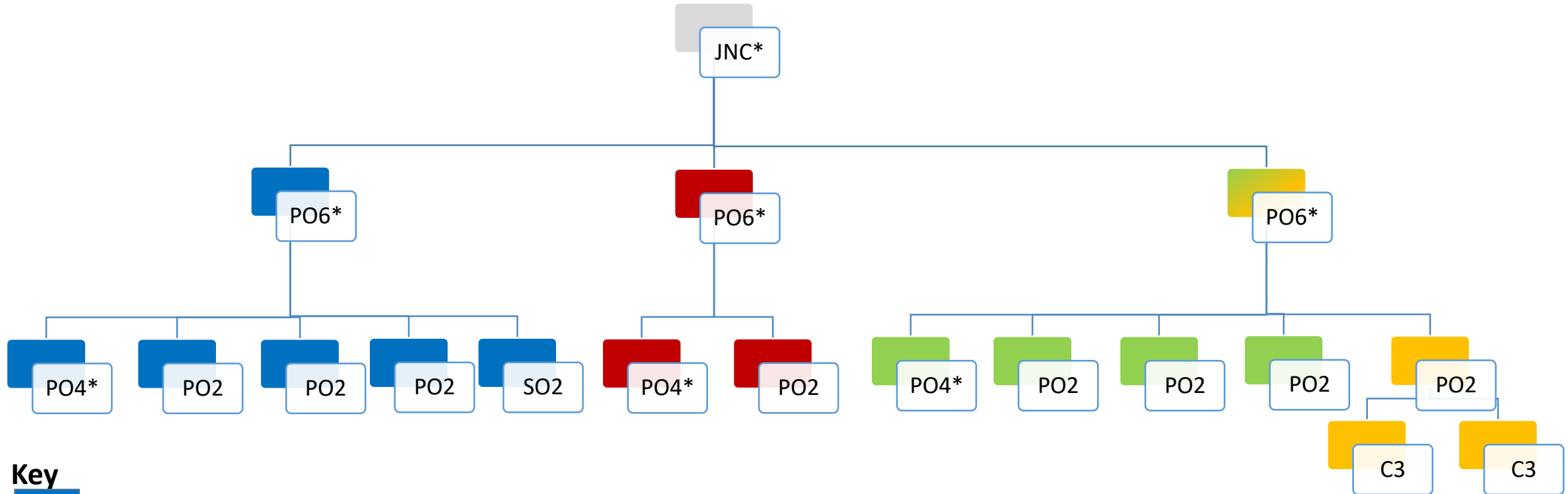
 Housing Data & Performance team

* ELI (Early Leavers' Initiative)

Current NJC staffing numbers

- Headcount: 22
- FTEs: 23.8
- Vacancies: 2.8 FTE
 - 2 x SO2 (1.0 FTE)
 - 1 x PO2 (0.76 FTE)

Intelligence & Policy Final Revised Structure March 2021 (following consultation)



Key

- Consultation & Engagement and Policy team
- Corporate Risk & Performance team
- Spatial Data & Intelligence team
- Housing Data & Performance team

* Expanded management team, working closely together across the teams, using matrix working on shared priorities and projects.

Proposed NJC staffing numbers

- Headcount: 17 (reduction of 5, includes 3 ELIs)
- FTEs: 16.65 (reduction of 7.14)
- Vacancies: 0